

The retreat begins with supper on Friday September 9 at 6:00; Supper will be served until the first session begins at 7:00 p.m.

The retreat ends after lunch on Sunday with worship at 11 a.m.

Free time is built into the schedule so you will be able to enjoy nature, relax, nap, and pray.

Directions

From I-90 at Laurel, take Highway 212 South 52 miles. Turn left at the small sign that says "Westminster Spires Church Camp," which is 9 miles past Red Lodge. Drive across the bridge over Rock Creek and park your car.

Westminster Spires Camp

is a ministry of Yellowstone Presbytery. This beautiful camp is located eight miles south of Red Lodge, Montana on Highway 212 along the shore of Rock Creek and at the base of Westminster Spires. The facilities include three dormitory-style cabins, four small cabins, a building for



crafts, worship and presentations, a dining hall, and a building with showers and bathrooms for men and women.

Our Retreat Director Sandra McKee, M.S., M. A., says, "The retreat will enhance awareness of our earth home and its needs. Drawing on traditions of mystics, scripture, indigenous wisdom and contemporary knowledge, we will explore ways to be mindful of our human part in the web of life. By recognizing the holiness in all of creation, we can make ordinary activities holy."

"...the place on which you are standing is holy ground."

Exodus 3:5

Additional speakers include:
Spencer Keck – *Contemporary Issues in Care of the Earth*

Highland Holy Days 2016 Registration Form

Westminster Spires Church Camp near Red Lodge MT Sept 9, 10, 11

Cynthia Kessler – *Art Integration of Caring for Our Earth Home*

Jim Tarr – *Introduction to Earth Care Now*

Sandy Welch – *Introduction to Essential Oils and Aroma Awareness*

Mike Ferguson and the Rev. Susan



Barnes will lead the program for children and youth.

When I look at your heavens,
the work of your fingers,
the moon and the stars
that you have established;
what are human beings
that you are mindful of them,
mortals that you care for them?

Psalms 8:3-4

Mail to St. Andrew Presbyterian Church
24th St. W Billings MT 59102

e-mail to office@standrewbillings.org

Questions? call 406-656-925

Name(s) _____)

Address _____

City, State, zip _____

Telephone (s) _____

Number of Campers: _____

Children _____ age _____

We will arrive on _____ at _____ am pm

(day of week) (time)

Dietary Restrictions for any in your group (allergies and intolerances)

\$40 per person \$ _____

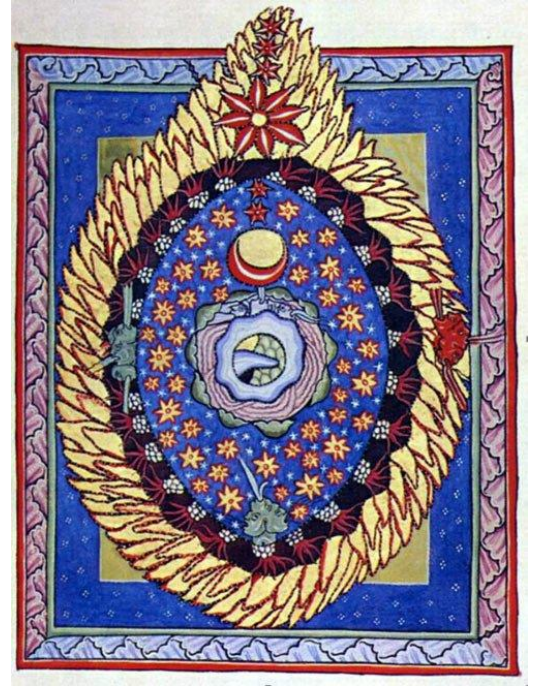
(maximum \$75 for family)

I (we) will attend worship and lunch \$7 each \$ _____

Donation \$ _____

Total amount \$ _____

Westminster Spires Church
Camp near Red Lodge, MT
A Ministry of
St. Andrew Presbyterian
Church
406-656-9256
Universe in the Cosmic Egg
by Hildegard of Bingen, 11th century



Registrations due September 1, 2016.

Care for Our Earth Home

Highland Holy Days Retreat September 9-11, 2016